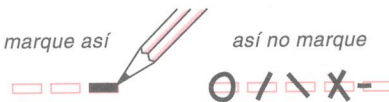




marque así

así no marque



HOJA DE RESPUESTAS

NO FIRME ESTA PARTE DE LA HOJA, NI CONSIGNE NINGÚN OTRO DATO.

CLAVE

Table with 10 rows and 5 columns (A-E) showing the correct answers for questions 1-10.

TIPO DE EXAMEN

Table with 1 row and 5 columns (A-E) showing the exam type for questions 1-10.

Table with 20 rows and 5 columns (A-E) showing the correct answers for questions 11-30.

Table with 20 rows and 5 columns (A-E) showing the correct answers for questions 31-50.

Table with 20 rows and 5 columns (A-E) showing the correct answers for questions 51-70.

Table with 20 rows and 5 columns (A-E) showing the correct answers for questions 71-90.

Table with 20 rows and 5 columns (A-E) showing the correct answers for questions 91-110.

